

兆禧橋暫時封閉以拆卸橋面

Temporary Closure of Siu Hei Bridge for Demolition of the Bridge Deck

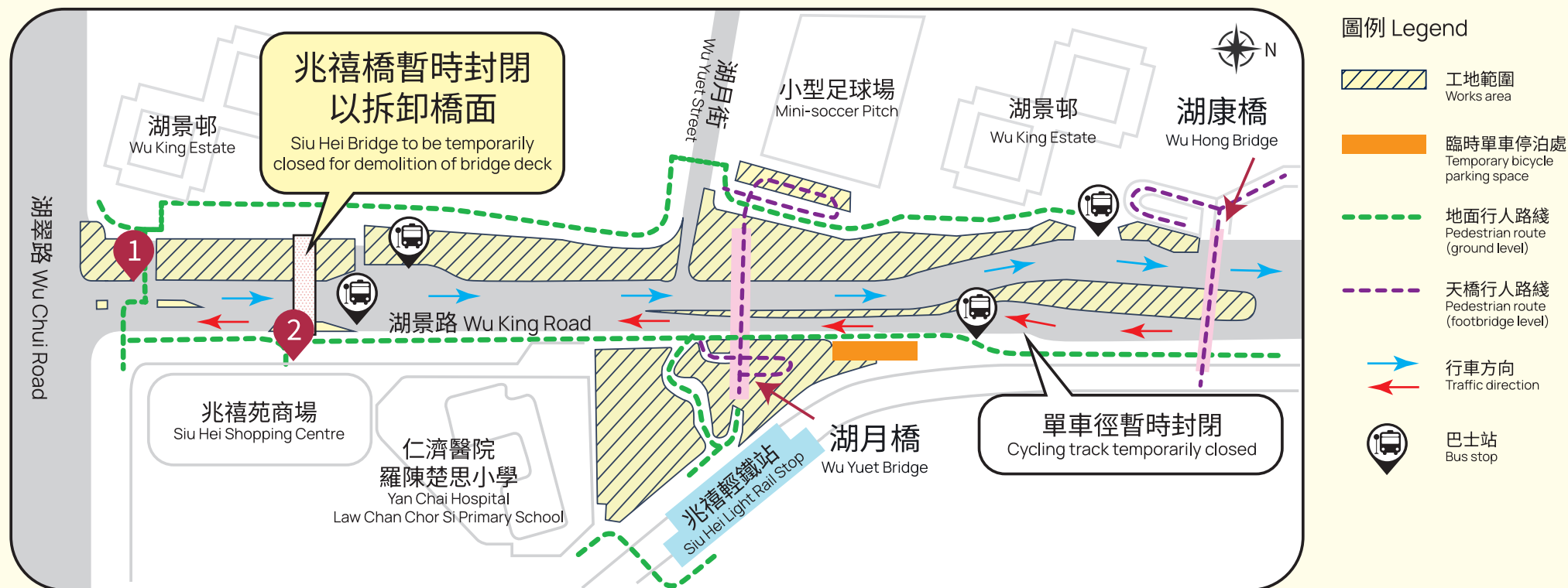


為配合屯門南延綫項目的建造工程，由2024年7月4日早上10時起，橫跨湖景路的兆禧橋會暫時封閉，以拆卸天橋橋面。

To facilitate the construction of Tuen Mun South Extension Project, the Siu Hei Bridge across Wu King Road will be temporarily closed starting from 10 am on 4 July 2024 for demolition of the bridge deck.



- 1 近湖翠路橫跨湖景路的現有地面行人過路處會維持開放
The existing at-grade pedestrian crossing near Wu Chui Road across Wu King Road will be maintained
- 2 通往兆禧苑商場的天橋斜道維持開放
The footbridge ramp connecting Siu Hei Shopping Centre will remain open



註：實施日期及時間可能會因應天氣及實地情況而作出調整，敬請留意現場資訊及項目網站。

Remarks: Implementation date and time may be adjusted subject to weather and on-site condition.

Please pay attention to the notice and information displayed on site and the project website.

兆禧橋拆卸及重置安排

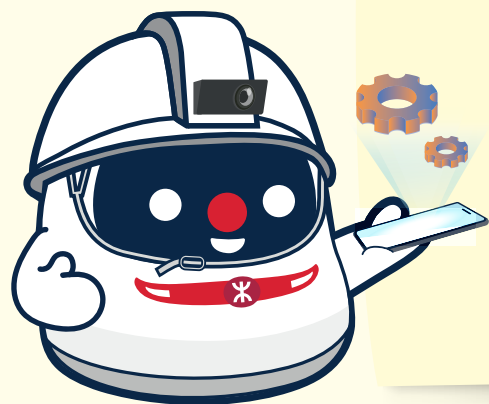
Siu Hei Bridge Demolition and Re-provisioning Arrangements



兆禧苑商場
Siu Hei Shopping Centre

兆禧橋未來將會重置，
日後亦會連接未來新車站

The Siu Hei Bridge will be re-provisioned
and will be connected to the future station



承建商24小時熱綫
Contractor's 24-hour Hotline

5186 6082

港鐵工程熱綫
MTR Projects Hotline

2993 3333

緊貼屯門南延綫工程資訊：
Learn more about the
Tuen Mun South Extension Project



車站名稱僅為工作名稱。圖像只作概念展示用途，展示內容亦僅供參考，可能會有所變化
Station name is working title only. All drawings and visuals are provided for concept illustration only, and the content is subject to change