

新聞稿

Press Release

PR053/25
22 July 2025

MTR Tuen Mun South Extension Project Progresses Steadily and in Full Swing Viaduct Construction on Tuen Mun River Commences with Comprehensive Planning to Minimise Impact on the Community

The Tuen Mun South Extension project undertaken by the MTR Corporation has entered the critical stage of railway viaduct construction along the Tuen Mun River, in which foundation works and pier construction have commenced to lay a solid foundation for the superstructure construction that is planned to start by the end of this year.

Under the new wave of MTR railway projects, the Tuen Mun South Extension will extend the Tuen Ma Line southward by approximately 2.4km from Tuen Mun Station via a viaduct. Two new stations will be constructed, including an intermediate station at Area 16 and a new terminal station at Tuen Mun South near the Tuen Mun Ferry Pier, with a targeted completion in 2030.

The Tuen Mun South Extension is designed to extend the operating railway, and the project is being built in the densely populated Tuen Mun community. The Corporation strives to minimise the works impact on the existing railway and the community as the top priority from planning to design and construction. During the design of the viaduct, the project team strived to minimise the impact of works on the community by reducing the number of piers and adopting a slender design to reduce the required occupation of river space and avoid alterations to existing facilities on the river.

Currently, the foundation works and pier construction of the viaduct have commenced progressively along the Tuen Mun River. In order to maintain the smooth flow of the river, the design has been optimised to reduce the number of piers required on the river by approximately 10 percent. As a result, fewer than 30 sets of piers employing slender cylindrical and V-shaped pier designs will be constructed on the river, which will effectively reduce the occupation of river space. In addition, the viaduct alignment was carefully planned to be close to the riverside, with the locations of the piers bypassing the three existing footbridges and one vehicular bridge across the river to maintain the pedestrian and vehicular flow.

-more-

During construction, the temporary working platforms built on the river also occupy minimal river area, with some of the temporary working platforms supported and elevated by temporary piles as far as practicable to maintain unimpeded river flow. A temporary river-crossing access is also being built to provide a direct access route to deliver construction materials to the worksites, which will reduce the traffic impact.

Where some of the viaduct and foundation works are in close proximity to Tuen Mun Station on the Tuen Ma Line, comprehensive risk assessments, method statements and contingency plans are also in place to minimise any impact on existing railway facilities and operations.

The railway viaduct section of the Tuen Mun South Extension is approximately 1.7km long, with about 1.3km running along the Tuen Mun River, including an approximately 250m long river-crossing bridge. It is the largest river railway viaduct project undertaken by the MTR Corporation in recent years.

-End-

About MTR Corporation

To Keep Cities Moving, MTR makes encounters happen and rendezvous for a more connected tomorrow. As a recognised world-class operator of sustainable rail transport services, we are a leader in safety, reliability, customer service and efficiency.

MTR has extensive end-to-end railway expertise with over 45 years of railway projects experience from design to planning and construction through to commissioning, maintenance and operations. Going beyond railway delivery and operation, MTR also creates and manages dynamic communities around its network through seamless integration of rail, commercial and property development.

With more than 50,000 dedicated staff*, MTR carries over 10 million passenger journeys worldwide every weekday in Hong Kong, Mainland China, Australia, the United Kingdom and Sweden. Together, we Go Smart and Go Beyond.

For more information about MTR Corporation, please visit www.mtr.com.hk.

*includes our subsidiaries, associates and joint ventures in Hong Kong and worldwide

Photo Caption:

1. The Tuen Mun South Extension will extend the Tuen Ma Line southward from Tuen Mun Station via a viaduct. Foundation and pier construction for the viaduct extension along the Tuen Mun River is being carried out progressively and in full swing.



(The station names are working titles only)

2. The river viaduct will be supported by fewer than 30 sets of piers. The viaduct includes an approximately 250m long river-crossing railway bridge to be supported by distinctive V-shaped piers. The simple design enables an unobstructed view of the Tuen Mun River.

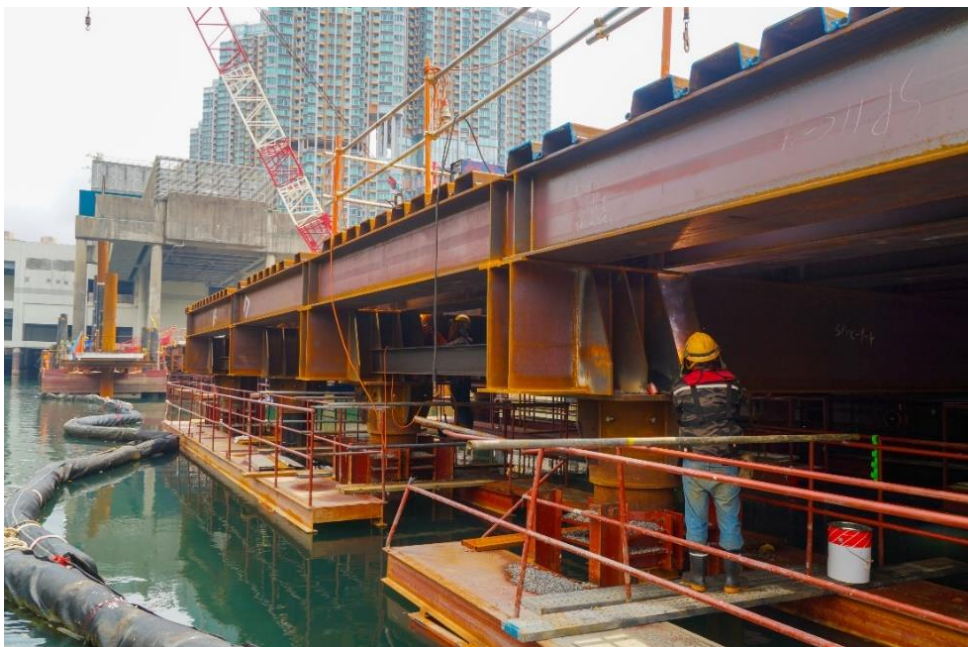


(All drawings and visuals are provided for concept illustration only, and the content is subject to change.)

3. Some of the future viaduct piles will be enclosed by corrugated spiral tubes. These tubes absorb vibrations when trains travel on the viaduct, thereby avoiding impact on the adjacent slope, river walls and nearby underground utilities.



4. At the works areas on the Tuen Mun River, the project team is also endeavouring to minimise the occupation of river space by elevating some of the temporary working platforms with piles to maintain unimpeded river flow.



5. Given the limited workspace for construction along the Tuen Mun River bank, the project team is building a temporary river-crossing access for the delivery of construction materials.

