

港鐵全力推展 屯門南延綫工程

CONSTRUCTION OF TUEN MUN SOUTH EXTENSION
IN FULL SWING

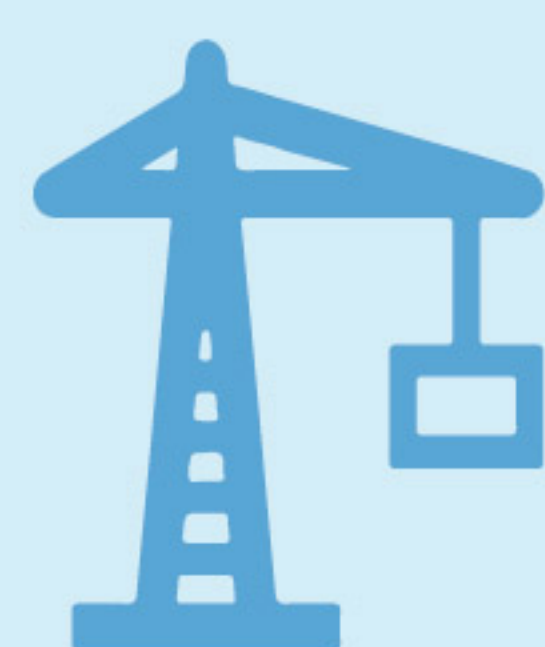
升級重置屯門游泳池 騰出空間建造第16區站

Tuen Mun Swimming Pool Reprovisioned and Upgraded
Creating Space for Construction of A16 Station



為騰出空間建造第16區站，屯門游泳池需要搬遷及重置。重置屯門游泳池於2023年開始建造，2025年年底完成後交予相關政府部門。設施預計於2026年第一季開放給市民使用。

To create space for the construction of A16 Station, the Tuen Mun Swimming Pool is being relocated and reprovisioned. Construction of the re-provisioned Tuen Mun Swimming Pool, which commenced in 2023, has been completed in the end of 2025 for handing over to relevant government department. The facility is expected to open for public in Q1 2026.



現有屯門游泳池將於2026年1月1日起永久關閉，以拆卸及全力建造第16區站

The existing Tuen Mun Swimming Pool will be permanently closed starting from 1 January 2026 for demolition and the full-scale construction of A16 Station



重置屯門游泳池 交通攻略

Tips for Travelling to the Re-provisioned Tuen Mun Swimming Pool





重置屯門游泳池位於屯門龍門路54號，由輕鐵車廠站(輕鐵)徒步數分鐘即達。

Located at No. 54 Lung Mun Road, the re-provisioned Tuen Mun Swimming Pool is within walking distance of the Light Rail Depot Stop (Light Rail).

地圖 Map



多項交通工具直達

Accessible by Various Transport Modes



輕鐵
Light Rail




輕鐵車廠站
Light Rail Depot Stop

610

615

615P



巴士
Bus

506, K52, K52A, 59A/M/X, 259B/C/D/E/X

小巴
Minibus

41, 44



輕鐵車廠站 / 新屯門中心站
Light Rail Depot Stop / Sun Tuen Mun Centre Stop

自駕
Self-driving

屯門康樂體育中心設有停車位

Parking spaces will be available at the Tuen Mun Recreation and Sports Centre



註：各車站名稱僅為工作名稱，圖像只作概念圖示用途，圖示內容亦僅供參考，可能會有所變化。
Note: The station names are working titles only. All drawings and visuals are provided for concept illustration only, and the content is subject to change.

建鐵路 建社區 提升生活質素

Constructing the Railway Community
Enhancing Quality of Life

- 2個全天候室內暖水池
2 all-weather indoor heated pools
- 主池為標準50米泳池，配備電子計分板
50m standard Main Pool with an electronic scoreboard

屯門游泳池是屯門南延綫項目中最大規模的重置項目。泳池的設計現代化，融入可持續發展元素。重置泳池的設施亦全面升級，設有全天候室內暖水池，室內觀眾看台座位數量提升近一倍，亦加入更多無障礙設施。

The re-provisioned Tuen Mun Swimming Pool is the largest re-provisioning facility under the TME. The re-provisioned swimming pool features a modern and sustainable design. Pool facilities have been upgraded with all-weather indoor heated pools, the number of seats in the indoor spectator stand has been doubled and there are enhanced barrier-free facilities.

更衣室
Changing Rooms

大量儲物櫃
Plenty of Lockers

觀眾席設1200個座位
1200 Seats at Spectator Stand

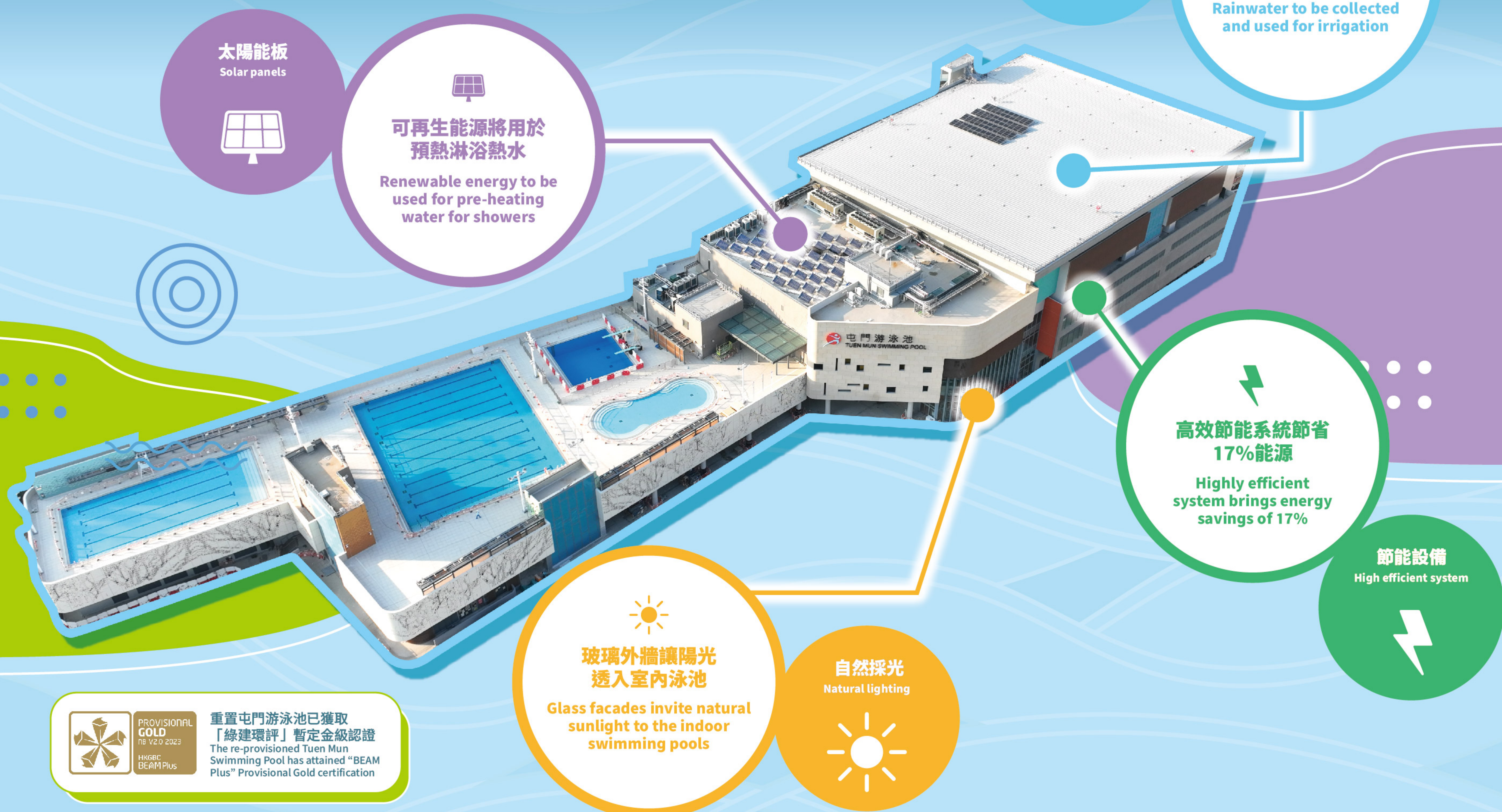
升降機連接各樓層
Lifts Connecting All Floors

4個室外泳池
4 Outdoor Pools

觀眾席設有輪椅平台
Wheelchair Platform Available on Spectator Stand

可持續綠色建築設計

Sustainable and Green Building Design



其他重置設施

Other Re-provisioning Facilities

